

# The VP700 Printer

Powered by

**memjet**

## Continuous printing of

- pressure-sensitive labels
- narrow web packaging
- retail tags
- professional documents
- pre-die-cut labels



## Specifications

- Output up to 8.5 inches wide
- Up to 60 feet per minute
- Print resolutions up to 1600 x 1600 dpi
- Variable data and barcoding capability
- Holds 1.25 liters of ink to support large runs
- Output to rewind or cut singles

## Features

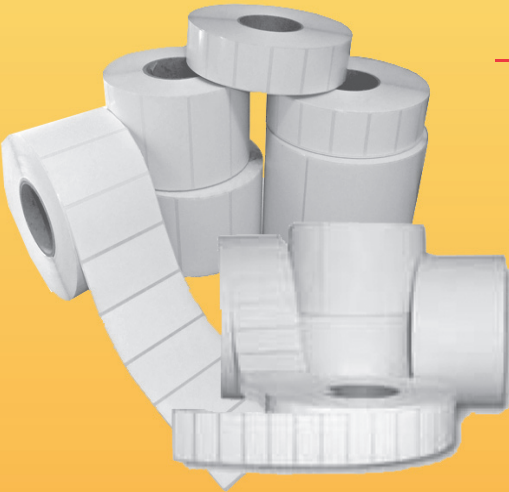
- USB or network connected
- Label Matrix, Bartender or Nice Label software
- Operator friendly design
- Run pre-die-cut label stocks on a variety of approved materials in perfect registration
- Run unconverted label stocks and convert after print

## Benefits

- Industrial web-fed inkjet solution
- Ideal for short to mid-run volumes
- Low cost-of-ownership
- Unprecedented flexibility & convenience
- Memjet printer technology
- High quality process color printing
- Full variable output for number and barcodes

# Stock Memjet Labels

## SHAPE & SIZE



### CIRCLE



**LxW**  
**1x1**  
**1.5x1.5**  
**2x2**  
**2.5x2.5**  
**3x3**  
**4x4**

### OVAL



**LxW**  
**.5x1**  
**1x1.5**  
**1x3**  
**2x2.5**  
**2x5**  
**3x3.5**  
**4x4.5**  
**4x6**  
**5x7**  
**5x8**

### SQUARE



**LxW**  
**1x1**  
**1.5x1.5**  
**2x2**  
**2.5x2.5**  
**3x3**  
**3.75x3.75**  
**4.25x4.25**  
**5x5**  
**7x7**  
**8x8**

### HORIZONTAL RECTANGLE



**LxW**  
**1x2**  
**1x3**  
**1x4**  
**2x4**  
**2x5**  
**3x5**  
**4x6**

### VERTICAL RECTANGLE



**LxW**  
**2x1**  
**3x1**  
**4x1**  
**4x2**  
**5x2**  
**5x3**  
**6x4**



**Custom runs available. Don't see your size? Ask us!**

## Label Stocks Available

Item	Material	Description	Suggested Use	Technical Specs
MMJ-110	Inkjet paper	61# Matte White	Food and product label applications. Offers very good color reproduction for high color applications. Very good adhesion to wide variety of materials.	61# paper facestock with permanent cold temp compatible adhesive.
MMJ-100	Inkjet paper	38# Matte White	Food and product label applications. Offers very good color reproduction for high color applications. Very good adhesion to a wide variety of materials.	38# paper facestock with permanent cold temp compatible adhesive.
MMJ-120	Inkjet paper	60# Gloss White Inkjet, FSC Certified	Food and product label applications. Offers very good color reproduction for high color applications. Very good adhesion to a wide variety of materials.	38# paper facestock with permanent cold temp compatible adhesive.
MMJ-130	Inkjet paper	50# FSC Certified 100% PCW Recycled	Very good adhesion to a wide variety of materials.	50# paper permanent cold temp compatible adhesive.
MMJ-150	Polypropylene	4 Mil Matte White	Very good adhesion to a wide variety of materials.	Resistance to chemicals and moisture but not suitable for immersion.
MMJ-160	Polyester	2 Mil Matte White	Aggressive adhesive designed for demanding applications such as drum labels white excellent adhesion to a wide variety of surfaces.	Resistant to tearing, heat, stretching and chemicals.
MMJ-170	Vinyl	4 Mil Vinyl	Good outdoor weather resistance	Better heat resistance but lower tear strength.